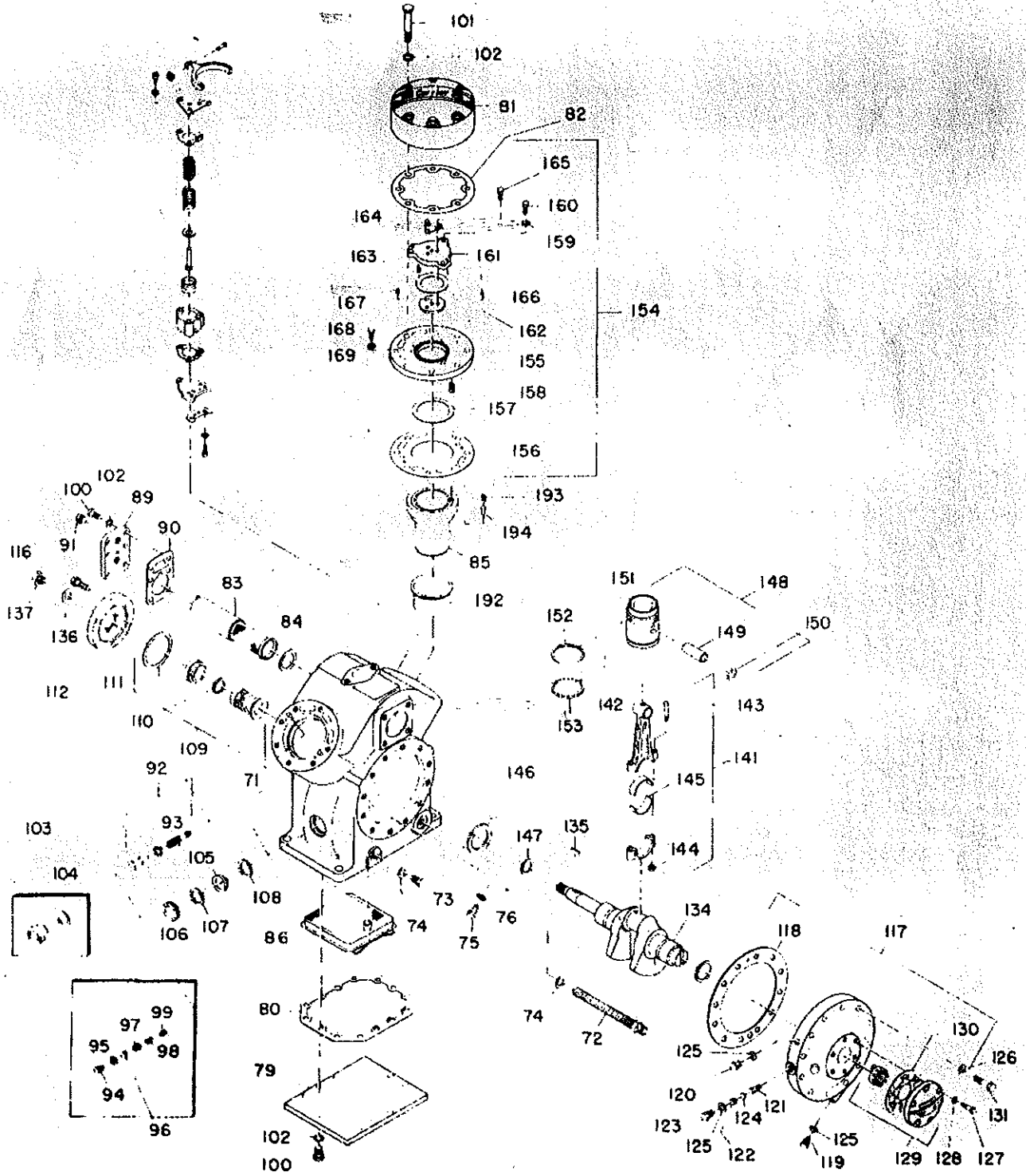




FREON CONDENSING UNIT

5F

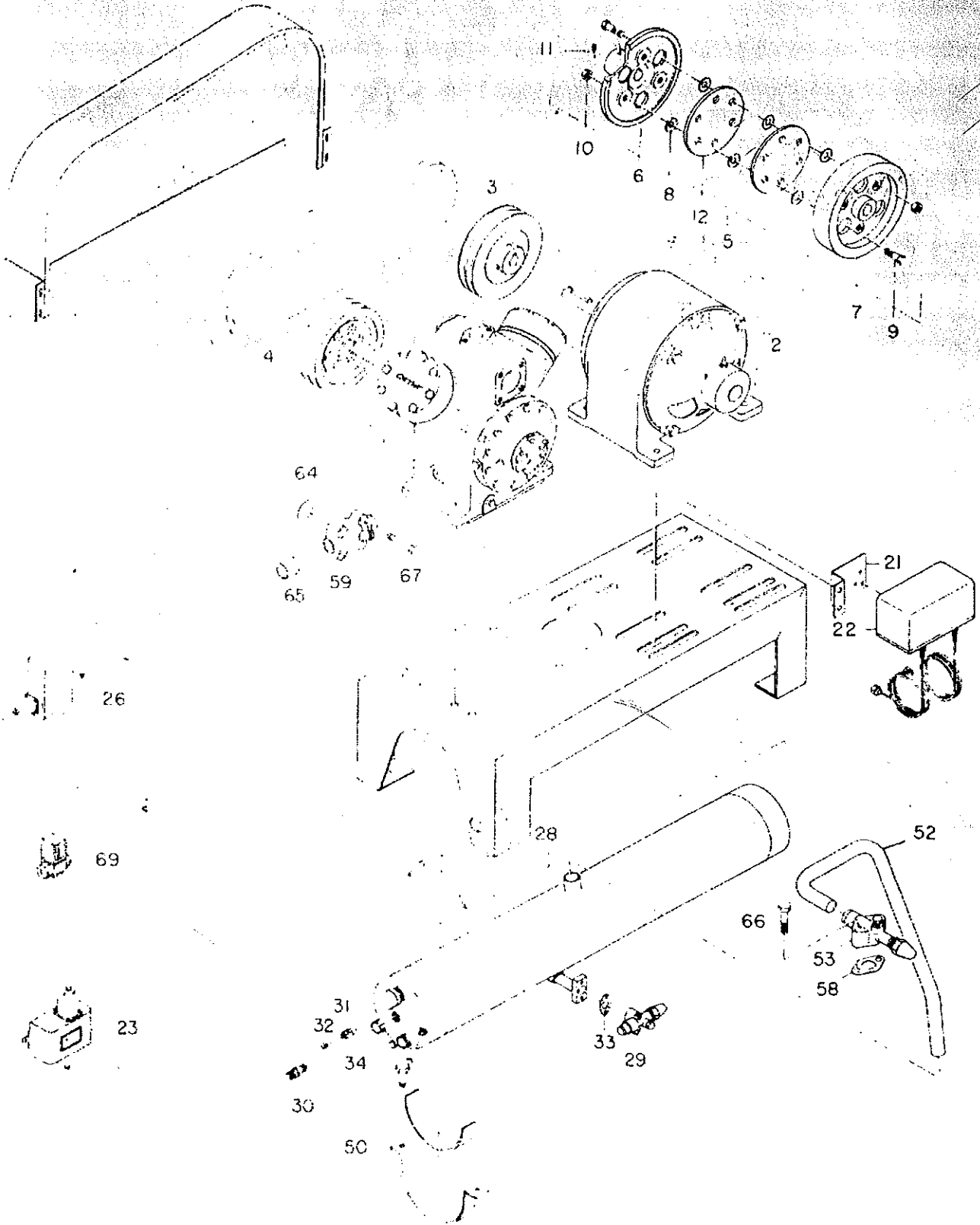


5F20.30



FREON CONDENSING UNIT

5F



5F20.30



FREON CONDENSING UNIT

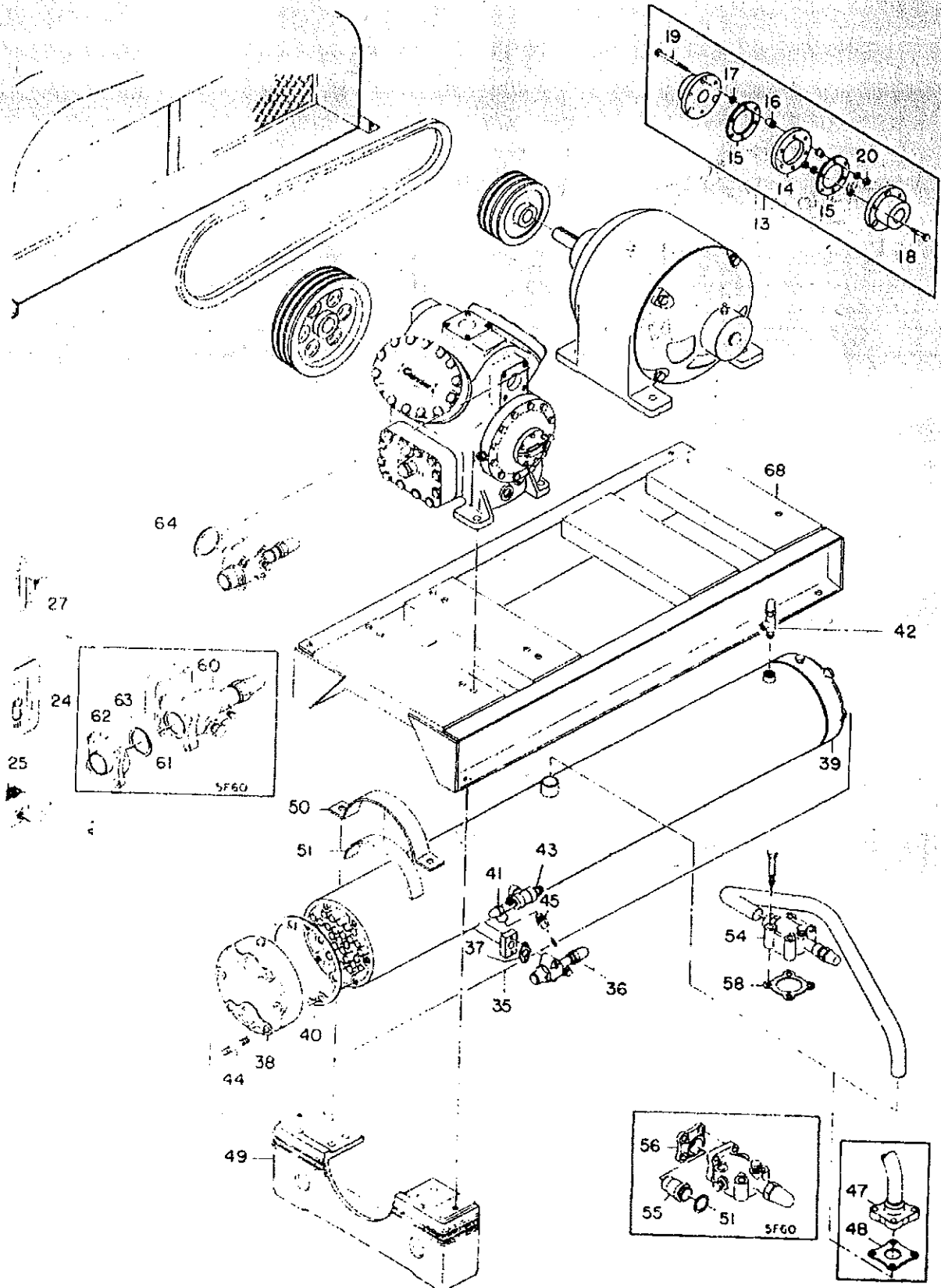
5F

ITEM NO.	PART NAME	LDC	REPLACEMENT PART NUMBER	UNIT USAGE			
				5F			
				20	30	40	60
COMPRESSOR GROUP							
1	Compressor (Without Unloaders)		5F20-S674	1			
			5F30-S644		1		
1	Compressor (With Unloaders) *Prior Serial HK201567 *Start Serial HK201567		5F20-A189	1			
			5F20-S684		1		
			5F30-S664		1		
			5F40-A219			1	
			5F60-A219				1
			5F20-A219	1			
<p>NOTES: 1. All Compressors are less Flywheels, Shut-Off Valves and Pressurestats, but with Valve Pads and Crankcase Heater Casing.</p> <p>2. Compressors for Carrene 20 are available on special order only. For Water Cooled Cylinder Head Packages see "Compressor Body Group."</p> <p>3. Belt Drive Packages which include Pulley, Belts and Flywheels are not listed. Refer to your 5F,H Master Price Pages.</p>							
DRIVE GROUP							
2	Compressor Motors	CD					
3	Belt Drive Packages (See Note #3 Above)	AP					
4	Flywheel Package 8" O.D., 7.5PD, 2B Groove (See Note #3 Above)	8" O.D., 7.5PD, 3B Groove	AP				
		10" O.D., 9.5PD, 3B Groove	AP				
		10" O.D., 9.5PD, 4B Groove	AP				
			AP				
5	Parts for Flexible Coupling Assembly (5F20 & 30 Only)						
6	Motor Flange - Select Correct Size	1" Bore (For Old Motor Frame 225)	NA				
		1 1/8" Bore (For Old Motor Frame 154)	AC				
		1 1/4" Bore (For Old Motor Frame 284)	AC				
7	Flywheel	AC	5F20-1463	1	1		
8	Spicer Beaded Washer	AC	5F20-1473	1	1		
9	Hex Hd. Capscrew	MP	50M4-1153	1	1		
10	Hex Nut	MP	AU51AB-271	18	18		
11	Set Screw (Motor)	MP	AA06BS-264	6	6		
12	Disc	AC	AT39AB-271	6	6		
		AC	AE19AS-224	2	2		
		AC	50M4-1352	2	2		



FREON CONDENSING UNIT

5F



5F40,60



FREON CONDENSING UNIT

5F

ITEM NO.	PART NAME	LDC	REPLACEMENT PART NUMBER	UNIT USAGE			
				5F			
				20	30	40	60

DRIVE GROUP (CONT'D.)

13	Flexible Coupling Packages							
	N.E.M.A. MOTOR H.P.	FRAME SIZE	MOTOR SHAFT DIAMETER					
	7 1/2	284 (Old)	1 1/4	NA	5F40-613		1	
	7 1/2, 10	254U, 256U	1 3/8	NA	5F40-603		1	1
	10, 15	324 (Old),						
		326 (Old) & 284U	1 5/8	NA	5F40-623		1	1
	20, 30	286U	1 5/8	NA	5F60-623		1	1
	25, 30	324U, 326U						
		& 364 (Old)	1 7/8	NA	5F60-613			1
	Packages 5F20-847, 5F30-847, 5F40-603, 5F40-613 & 5F40-623 Include:							
	Center Ring		(1) 5F-11238	AC				
14	Disc (Multiple Rings)		(2) 5F-10663	AC				
15	Spacer		(6) 5F-11223	AC				
16	Bevel Washer		(18) 5F-10731	AC				
17	Short Bolt		(6) 5F-10728	AC				
18	Long Bolt		(3) 5F-11198	AC				
19	Lock Nut		(9) AT61AA-172	MP				
NI	Motor Flange - Specify Motor Shaft Dia. as shown above							
NI	Compressor Flange		(1) 5F-11772	NS				
	Packages 5F60-623 and 5F60-613 Include:							
	Center Ring		(1) 5F11241	AC				
14	Disc (Multiple Rings)		(2) 5F-10664	AC				
15	Spacer		(6) 5F-11240	AC				
16	Bevel Washer		(18) 5F-11205	AC				
17	Short Bolt		(6) 5F-10721	AC				
18	Long Bolt		(3) 5F-11206	AC				
19	Lock Nut		(9) AT61AA-202	MP				
20	Motor Flange - For 1 5/8 Dia. Shaft		(1) 5F-21925	NS				
NI	- For 1 7/8 Dia. Shaft		(1) 5F-21748	NS				
NI	Compressor Flange		(1) 5F-21853	NS				

CONTROL GROUP

NI	Oil Gauge 0-200#			AC	KM01BC-200		1	1	
21	Pressure Control Bracket - Allen Bradley			NA	5F40-1372		1		
	- Allen Bradley			NA	5F30-1372			1	
	- Robertshaw			AC	*5F40-5202				1
22	Dual Pressure Control (Carrene 12, 22, 500)								
	Allen Bradley High Side			AC	HK02HA-012		1	1	
	Low Side			AC	HK02HB-012		1	1	
	Robertshaw High Side			AC	*HK02UA-300		1	1	1
	Low Side			AC	*HK02UB-050		1	1	1

NOTE: *Bracket 5F40-5202 is required when replacing any oil gauge bracket (Dual or HK04UN-500 Type). When replacing a bracket on 5F40 and 60, both the High and Low Sides are to be replaced. The 5F30 and 30 Compressors will require a bracket on the Compressor Base.



FREON CONDENSING UNIT

5F

ITEM NO.	PART NAME	LDC	REPLACEMENT PART NUMBER	UNIT USAGE			
				5F			
				20	30	40	60
CONTROL GROUP (CONT'D.)							
NI	Enclosure, Robertshaw	AC	HK09UZ-012	1	1		
NI	Parts for Oil Safety Switch Package ("Early Type") For 5F20-933 Package - 110V, 208/230V, 440V, 550V; AC, 50/60HZ and 5F20-943 Package - 230V, DC (Both used with single Compressor, Carrene 12 or 500)						
NI	Adapter - 5/8"-18 x 1/4 I.P.S.	AG	5F20-1311				
NI	Gasket	MP	AU51YA-011				
NI	Flare Nut - Short - 1/4"	AC	DD02CA-051				
NI	Half Union Coupling - 1/4"	AC	DD07DA-051				
23	*Differential Pressure Switch	AC	HK06UC-014				
24	Time Delay Relay	NA	*HN68AD-006				
NI	*Thermal Element	NA	HN71AZ-131				
25	*Transformer (5F20-933 Only)	NA	HT01AC-150				
NI	*Resistor (5F20-943 Only)	NA	HT21AM-180				
	Oil Safety Switch Package ("Latest Type") 110V, 208/220, AC or DC - For Single Compressor - For Duplex Compressor	NA NA	5F20-212 5H40-287	1 1	1 1	1 1	1 1
	For use with 440 and 550 Volt a suitable Transformer and Relay will be necessary Includes:						
				ON	ON		
				5F20	5H40		
NI	Adapter	AC	(1) (2) 5F20-1311				
NI	Gasket	MP	(1) (2) AU51YA-011				
NI	Flare Nut 1/4"	AC	(2) (4) DD02CA-051				
NI	Half Union Coupling	AC	(3) (4) DD07DA-051				
26	**Differential Pressure Switch with Time Delay Relay	AC	(1) *(1) HK06UL-012				
27	Differential Pressure Switch - No Relay	AC	(1) HK06UA-012				
	<i>NOTE: HK06UL-012 may be used as a replacement for the Differential Pressure Switch, Time Delay Relay and the Transformer (or Resistor on DC).</i>						
	<i>*When 5F20-943 was supplied with some machines using 5-12. Replace with HK06UL-012.</i>						
NI	Oil Cooler Package	AP	5F20-547			1	1
	Includes:						
NI	Oil Cooler	AC	(1) KH52HC-101				
NI	Cooler Bracket	NA	(1) 5F20-4932				
NI	Coupling (Oil Cooler)	AC	(1) DD07DA-051				
NI	Bracket Stud	NA	(2) 5F20-1781				
NI	Lockwasher 3/8"	NA	(2) AU11AR-241				
NI	Hex Nut	MP	(2) AT39AA-241				
NI	Set Screw, Bracket 7/16-14 x 3/8"	AC	(1) AE11AR-254				
NI	Coupling (Rearing Head)	NA	(4) DD07DA-101				



FREON CONDENSING UNIT

5F

ITEM NO.	PART NAME	LDC	REPLACEMENT PART NUMBER	UNIT USAGE			
				5F			
				20	30	40	60

CONTROL GROUP (CONT'D.)

	Electrical Compensated Capacity ("Latest Design") Control-Bevel Gear Type (Accessory) Minn-Honeywell Barber Colman		*NA *NA *NA	5F40-777 5F40-787 5F40-807			1 1 1	1 1 1
	Each Includes:	ON 5F40						
		777 807 787						
NI	Control Motor	1		1	HF25AA-001 HF12CB-116	AC		
			1		HT01AA-120	NS		
NI	Transformer	1			HT01AA-115	NS		
NI	Relay	1	1		HN61DJ-005	NS		
NI	Bevel Gear Assembly	1	1		5F40-A772	AC		
				1	5F40-A762	NA		
NI	Bevel Gear Assembly	1	1	1	5F40-791	AC		
NI	Special Stud	4	4	4	5F40-4912	NA		
NI	Outer Valve Assembly	1	1	1	5F40-A782	NA		
NI	Support Plate	1	1	1	5F40-2243	NA		
NI	Hex Hd. Screw 1/4"-20 x 1	4	4	3	AA06BR-170	NS		
NI	Mach Screw Nut 1/4"	4	4	3	AT39AB-171	MP		
NI	Plain Washer 1/4"	4	4	3	AU01AB-171	MP		
NI	Lockwasher 1/4"	6	6	5	AU11AS-171	MP		
NI	Flanged Bearing	1	1	1	KT66CX-031	NA		
NI	Hex Hd. Screw 1/4"-20 x 3/8	2	2	2	AA06BS-164	NA		
NI	F.H. Socket Screw	4	4	4	AC27PR-166	NA		
NI	Grease Fitting	1	1	1	CW12CB-502	NA		
NI	Cap Screw Gasket 3/8	4	4	4	AU51YA-005	MP		
	Parts for Electrical Compensated Capacity Control-Spur Gear Type ("Early Design") (Motor, Transformer and Relay same as above) Each Includes:							
NI	Spur Gear - 3"P.D. on Minn-Honeywell				5F40-771	NA		
	- 2 1/2"P.D. on Barber Colman				5F40-761	NA		
NI	Spur Gear - 5/8"P.D.				5F40-751	AC		
NI	Support Bracket				5F40-4702	NA		
NI	Set Screw				5F40-3791	NA		
NI	Motor Bracket				5F40-2183	NA		
NI	Control Valve				5F40-A332	AC		

CONDENSER GROUP

28	Condenser Assembly - (Shell & Coil) 5 Ton, 28 5/8" overall x 8 5/16" O.D., 1 3/8" O.D. Hot Gas Inlet		NA	5F20-344			1	
	7 1/2 Ton, 39 5/8" overall x 8 5/16" O.D., 1 3/8" O.D. Hot Gas Inlet		NA	5F30-344				1
	Includes:							
29	Liquid Valve	(1)	AC	EP12BH-211				
30	*Flangible Safety Union - 385 PSI	(1)	AC	EB51LR-385				
NI	Purge Cock Assembly	(2)	AC	7F0-132				
	Includes:							
31	Body	(1)	NS	7F0-1452				
32	Stem	(1)	NA	50146				



FREON CONDENSING UNIT

5F

ITEM NO.	PART NAME	LDC	REPLACEMENT PART NUMBER	UNIT USAGE			
				20	30	40	60
CONDENSER GROUP (CONT'D.)							
28	Condenser Assembly - (Shell & Coil) ("Early Type" Distinguished by 7" Dia.) 43 1/2" overall x 7" Dia. Includes:		445F20-469 5F30-469				
29	Liquid Shut-Off Valve For 5F20 - 5/8 ODS	(1) EN32AA-212	AC				
	For 5F30 - 7/8 ODS	(1) EN07AA-271	AC				
30	Fusible Safety Union	(1) EK41JK-202	AG				
	Purge Cock Assembly	(1) 7F0-132	AC				
33	Valve Gasket	(1) 6D23-1421	MP				
34	Angle Valve	(1) EP23SC-090	AC				
NOTE: *Condenser Assemblies prior to Serial #4250200 must use the following Safety Devices:							
NI	Fusible Safety Union - Approx. 100 PSI	(1) EK41JK-202	AC				
NI	For 5F20 & 30	(1) EK41JK-302	NA				
**5F20-469 not available - replace with							
NI	Condenser Support Strap Package	(1) 5F20-344 (1) 5F20-A532	AC AC				
NI	Support Strap	(2) 5F20-2042	AC				
NI	Strap Liner	(2) 5F20-1882	NS				
It is necessary to put blocks under the Compressor Base to make this connection.							
35	Condenser Assembly - (Shell & Tube) 10 Ton, 63" overall x 8 5/8" O.D., 1 3/8" O.D. Hot Gas Inlet		NA	5F40-429		1	1
	15 Ton, 74" overall x 8 5/8" O.D., 1 5/8" O.D. Hot Gas Inlet		NA	5F60-429		1	1
Includes:							
ON							
5F40 5F60							
36	Liquid Valve 7/8" O.D.	1	EN07AA-271	AC			
	1 1/8" O.D.	1	EN07AA-395	AC			
37	Valve Gasket	1	6D23-1421	MP			
		1	7K4-4522	MP			
38	Nozzle Water Head	1	5F40-1203	AC			
39	Blank Water Head	1	5F40-1213	AC			
40	Water Head Gasket-Front Conn	2	09RA011-1303	AC			
NI	-Rear Plain	1	09RA011-1313	AC			
41	Angle Valve (Water Regulating)	1	EP23LC-090	AC			
42	Angle Valve (Purge)	2	EP23SC-090	AC			
43	*Pressure Relief Valve - 395 PSI	1	EB511P-121	AC			
NI	Tru Fin Tube	26	99TF501784	AC			
		30	99TF501794	AC			
44	Stud Bolt	12	AR07AA-468	NS			
45	Trv Cock Assembly	1	7F0-132	AC			
NI	Screw 5/8-11 x 3 Lg.	8	AAG6BR-329	AC			
NI	Nut 5/8-11	8	AT11AA-331	AC			



FREON CONDENSING UNIT

5F

ITEM NO.	PART NAME	LDC	REPLACEMENT PART NUMBER	UNIT USAGE			
				20	30	40	60

CONDENSER GROUP (CONT'D.)

<p>Condenser Assembly - in 5F40 & 60 Sizes ("Early Type") with Flanged Discharge are replaced by the standard 5F40-429 & 5F60-429 Condenser. Parts on the "Early Type" Condenser are the same as standard except for the following: (Items 47-51)</p>																																																																																																										
47	Discharge Line Flanged Adapter																																																																																																									
	1 3/8" O.D. Tube	NA	DK16CA-901			1																																																																																																				
	1 5/8" O.D. Tube	NS	DK16CB-301				1																																																																																																			
48	Discharge Line Flanged Gasket	AC	55452			1	1																																																																																																			
43	Fusible Safety Union (Pressure Relief)	NA	EX41JK-302			1	1																																																																																																			
49	Condenser Support	NS	05HY500-253			2	2																																																																																																			
50	Condenser Strap	NS	5F20-2042	2	2																																																																																																					
		NS	5F40-1662			4	4																																																																																																			
51	Condenser Strap Liner	NA	5H40-1692	4	4																																																																																																					
		AC	5H120-1682			4	4																																																																																																			
<p>NOTE: Liners may have to be cut to desired length.</p>																																																																																																										
52	Discharge Line (Not normally stocked) (Select from Combination below)																																																																																																									
<table border="1"> <thead> <tr> <th>"Late Units"</th> <th>COMPR.</th> <th>COND.</th> <th>PART NUMBER</th> </tr> </thead> <tbody> <tr> <td rowspan="10">For: Belt Drive Units</td> <td>5F20</td> <td>5F20</td> <td>5F20-1003</td> </tr> <tr> <td>5F20</td> <td>5F30</td> <td>5F20-223</td> </tr> <tr> <td>5F30</td> <td>5F20</td> <td>5F30-113</td> </tr> <tr> <td>5F30</td> <td>5F30</td> <td>5F30-1063</td> </tr> <tr> <td>5F30</td> <td>5F40</td> <td>5F30-1033</td> </tr> <tr> <td>5F40</td> <td>5F30</td> <td>5F40-1033</td> </tr> <tr> <td>5F40</td> <td>5F40</td> <td>5F40-1204</td> </tr> <tr> <td>5F40</td> <td>5F60</td> <td>5F40-284</td> </tr> <tr> <td>5F60</td> <td>5F40</td> <td>5F60-113</td> </tr> <tr> <td>5F60</td> <td>5F60</td> <td>5F60-1063</td> </tr> <tr> <td rowspan="4">For: Direct Drive Units</td> <td>5F40</td> <td>5F40</td> <td>5F40-1503</td> </tr> <tr> <td>5F40</td> <td>5F60</td> <td>5F40-107</td> </tr> <tr> <td>5F60</td> <td>5F60</td> <td>5F60-1503</td> </tr> <tr> <td>5F60</td> <td>5F40</td> <td>5F60-107</td> </tr> <tr> <td colspan="8"> <table border="1"> <thead> <tr> <th>"Early Units"</th> <th>COMPR.</th> <th>COND.</th> <th>PART NUMBER</th> </tr> </thead> <tbody> <tr> <td rowspan="12">For: Belt Drive Units</td> <td>5F20</td> <td>5F20</td> <td>5F20-1433</td> </tr> <tr> <td>5F30</td> <td>5F20</td> <td>5F30-413</td> </tr> <tr> <td>5F30</td> <td>5F30</td> <td>5F30-1433</td> </tr> <tr> <td>5F40</td> <td>5F30</td> <td>5F40-1184</td> </tr> <tr> <td>5F40</td> <td>5F40</td> <td>5F40-394</td> </tr> <tr> <td>5F60</td> <td>5F40</td> <td>5F60-303</td> </tr> <tr> <td>5F40</td> <td>5F30</td> <td>5F40-1423</td> </tr> <tr> <td>5F40</td> <td>5F40</td> <td>5F40-213</td> </tr> <tr> <td>5F60</td> <td>5F60</td> <td>5F60-213</td> </tr> <tr> <td>5F60</td> <td>5F60</td> <td>5F60-223</td> </tr> </tbody> </table> </td> </tr> <tr> <td colspan="8"> <p>+Compressor has 1" Spacer Blocks to accommodate larger motor.</p> </td> </tr> </tbody> </table>								"Late Units"	COMPR.	COND.	PART NUMBER	For: Belt Drive Units	5F20	5F20	5F20-1003	5F20	5F30	5F20-223	5F30	5F20	5F30-113	5F30	5F30	5F30-1063	5F30	5F40	5F30-1033	5F40	5F30	5F40-1033	5F40	5F40	5F40-1204	5F40	5F60	5F40-284	5F60	5F40	5F60-113	5F60	5F60	5F60-1063	For: Direct Drive Units	5F40	5F40	5F40-1503	5F40	5F60	5F40-107	5F60	5F60	5F60-1503	5F60	5F40	5F60-107	<table border="1"> <thead> <tr> <th>"Early Units"</th> <th>COMPR.</th> <th>COND.</th> <th>PART NUMBER</th> </tr> </thead> <tbody> <tr> <td rowspan="12">For: Belt Drive Units</td> <td>5F20</td> <td>5F20</td> <td>5F20-1433</td> </tr> <tr> <td>5F30</td> <td>5F20</td> <td>5F30-413</td> </tr> <tr> <td>5F30</td> <td>5F30</td> <td>5F30-1433</td> </tr> <tr> <td>5F40</td> <td>5F30</td> <td>5F40-1184</td> </tr> <tr> <td>5F40</td> <td>5F40</td> <td>5F40-394</td> </tr> <tr> <td>5F60</td> <td>5F40</td> <td>5F60-303</td> </tr> <tr> <td>5F40</td> <td>5F30</td> <td>5F40-1423</td> </tr> <tr> <td>5F40</td> <td>5F40</td> <td>5F40-213</td> </tr> <tr> <td>5F60</td> <td>5F60</td> <td>5F60-213</td> </tr> <tr> <td>5F60</td> <td>5F60</td> <td>5F60-223</td> </tr> </tbody> </table>								"Early Units"	COMPR.	COND.	PART NUMBER	For: Belt Drive Units	5F20	5F20	5F20-1433	5F30	5F20	5F30-413	5F30	5F30	5F30-1433	5F40	5F30	5F40-1184	5F40	5F40	5F40-394	5F60	5F40	5F60-303	5F40	5F30	5F40-1423	5F40	5F40	5F40-213	5F60	5F60	5F60-213	5F60	5F60	5F60-223	<p>+Compressor has 1" Spacer Blocks to accommodate larger motor.</p>							
"Late Units"	COMPR.	COND.	PART NUMBER																																																																																																							
For: Belt Drive Units	5F20	5F20	5F20-1003																																																																																																							
	5F20	5F30	5F20-223																																																																																																							
	5F30	5F20	5F30-113																																																																																																							
	5F30	5F30	5F30-1063																																																																																																							
	5F30	5F40	5F30-1033																																																																																																							
	5F40	5F30	5F40-1033																																																																																																							
	5F40	5F40	5F40-1204																																																																																																							
	5F40	5F60	5F40-284																																																																																																							
	5F60	5F40	5F60-113																																																																																																							
	5F60	5F60	5F60-1063																																																																																																							
For: Direct Drive Units	5F40	5F40	5F40-1503																																																																																																							
	5F40	5F60	5F40-107																																																																																																							
	5F60	5F60	5F60-1503																																																																																																							
	5F60	5F40	5F60-107																																																																																																							
<table border="1"> <thead> <tr> <th>"Early Units"</th> <th>COMPR.</th> <th>COND.</th> <th>PART NUMBER</th> </tr> </thead> <tbody> <tr> <td rowspan="12">For: Belt Drive Units</td> <td>5F20</td> <td>5F20</td> <td>5F20-1433</td> </tr> <tr> <td>5F30</td> <td>5F20</td> <td>5F30-413</td> </tr> <tr> <td>5F30</td> <td>5F30</td> <td>5F30-1433</td> </tr> <tr> <td>5F40</td> <td>5F30</td> <td>5F40-1184</td> </tr> <tr> <td>5F40</td> <td>5F40</td> <td>5F40-394</td> </tr> <tr> <td>5F60</td> <td>5F40</td> <td>5F60-303</td> </tr> <tr> <td>5F40</td> <td>5F30</td> <td>5F40-1423</td> </tr> <tr> <td>5F40</td> <td>5F40</td> <td>5F40-213</td> </tr> <tr> <td>5F60</td> <td>5F60</td> <td>5F60-213</td> </tr> <tr> <td>5F60</td> <td>5F60</td> <td>5F60-223</td> </tr> </tbody> </table>								"Early Units"	COMPR.	COND.	PART NUMBER	For: Belt Drive Units	5F20	5F20	5F20-1433	5F30	5F20	5F30-413	5F30	5F30	5F30-1433	5F40	5F30	5F40-1184	5F40	5F40	5F40-394	5F60	5F40	5F60-303	5F40	5F30	5F40-1423	5F40	5F40	5F40-213	5F60	5F60	5F60-213	5F60	5F60	5F60-223																																																																
"Early Units"	COMPR.	COND.	PART NUMBER																																																																																																							
For: Belt Drive Units	5F20	5F20	5F20-1433																																																																																																							
	5F30	5F20	5F30-413																																																																																																							
	5F30	5F30	5F30-1433																																																																																																							
	5F40	5F30	5F40-1184																																																																																																							
	5F40	5F40	5F40-394																																																																																																							
	5F60	5F40	5F60-303																																																																																																							
	5F40	5F30	5F40-1423																																																																																																							
	5F40	5F40	5F40-213																																																																																																							
	5F60	5F60	5F60-213																																																																																																							
	5F60	5F60	5F60-223																																																																																																							
	<p>+Compressor has 1" Spacer Blocks to accommodate larger motor.</p>																																																																																																									



FREON CONDENSING UNIT

5F

ITEM NO.	PART NAME	LDC	REPLACEMENT PART NUMBER	UNIT USAGE			
				20	30	40	60
CONDENSER GROUP (CONT'D.)							
NI	Tube Brush (Nylon)		KC21AH-105	As Required			
COMPRESSOR SHUT-OFF VALVE GROUP							
53	Discharge Shut-Off Valve - 7/8 O.D.S. (SSN K201567) - 7/8 O.D.S. (PSN K201567) - 1 1/8 O.D.S.	AC AC AC	EN07AA-284 EN07AA-390 EN07AA-395	1 1 1			
	Each Includes:						
NI	Seal Cap (1) EN99ZA-002	AC					
NI	Seal Cap Gasket (1) EN99ZA-102	MP					
NI	Companion Flange (1) EN99ZD-005	NA					
NI	Adapter Gasket (1) EN99ZE-005	NA					
NI	Adapter for EN07AA-390 (1) EN99ZC-027	NA					
	for EN07AA-395 (1) EN99AC-033	NA					
53	Valve - 1 3/8 O.D.S.		EN07EA-039	1	1		
	Includes:						
NI	Seal Cap (1) EN99ZA-002	AC					
NI	Seal Cap Gasket (1) EN99ZA-102	MP					
53	Valve - 1 5/8 O.D.S.		EN13HA-045				1
	Includes:						
NI	Seal Cap (1) EN99ZA-002	AC					
NI	Seal Cap Gasket (1) EN99ZA-102	MP					
55	Adapter (Tail Piece) (1) EN99ZC-045	NS					
56	Companion Flange (1) EN99ZD-010	AC					
57	Adapter Gasket (1) EN99ZE-010	NS					
58	Valve Gasket <i>(To be used with EN07AA-284)</i>	MP MP MP MP	6D40-1131 7K4-4522 5F30-1361 DK36GA-001	1 1		1 1	
59	Suction Shut-Off Valve - 1 1/8" O.D.S. (SSN K201567) (PSN K201567)	AC AC	EN07EA-033 EN07EC-341	1 1			
59	Suction Shut-Off Valve - 1 5/8" O.D.S.		EN07EA-041	1	1		
	Includes:						
NI	Seal Cap (1) EN99ZA-002	AC					
NI	Seal Cap Gasket (1) EN99ZA-102	MP					
60	Suction Shut-Off Valve - 2 1/8" O.D.S.		EM13FC-521				1
	Includes:						
NI	Seal Cap (1) EN99ZA-018	AC					
NI	Seal Cap Gasket (1) EN99ZA-109	AC					
61	Adapter (Tail Piece) (1) EP29VC-540	AC					
62	Companion Flange (1) EP29ZC-560	NA					
63	Adapter Gasket (1) EP29YC-560	AC					
64	Valve Gasket	AC MP MP	7K3-4522 5F30-1361 5H40-1361	1	1	1	
65	Valve Adapter - 1 1/8" Fitting x 1 3/8" Solder Cup	AC	DE20BA-903	1			
66	Capscrew 1/2-13 x 2 1/4 (Discharge Valve)	MP	AA06BR-296	2			
67	1/2-13 x 2 1/2 (Suction Valve)	MP	AA06BR-297	4			
NI	1/2-13 x 3 (Suction & Discharge Valve) For EN07BA-401	MP	AA06BR-299	8	8		



FREON CONDENSING UNIT

5F

ITEM NO.	PART NAME	LDC	REPLACEMENT PART NUMBER	UNIT USAGE			
				5F			
				20	30	40	60
COMPRESSOR SHUT-OFF VALVE GROUP (CONT'D.)							
NI	Capcrew 1/2-13 x 3 (Suction & Discharge Valve) For EN07BA-461 For EN07EA-039 For EN07EA-041 1/2-13 x 3 1/4 (Discharge Valve) 5/8-11 x 2 1/2 (Suction Valve)	MP MP MP NS NA	AA06BR-299 AA06BR-297 AA06BR-297 AA06BR-298 AA06BR-327	8 8 8	8 8 8		4 4
MISCELLANEOUS GROUP							
68	Compressor Base Assembly For use with 5F20 & 30 Condenser Belt Drive For use with 5F40 & 60 Condenser Belt Drive For use with 5H40 Condenser Belt Drive Direct Drive Direct Drive when used with 5H40 Condenser **"Early Units" Belt Drive Direct Drive <i>NOTE: "Early Units" were used with the old N.E.M.A. Motor Frame.</i>	NS NS NS NS NS NS NS	5F20-238 5F40-408 5H40-598 5F40-398 5H40-588 5F20-569 5F40-A299	1 1 1 1 1	1 1 1 1	1 1 1 1	1 1 1 1
NI	Compressor Shim (Laminated) 3 1/8 x 2 1/16 x 1/32 Thk. (C.R.S.) 3 1/8 x 2 1/16 x 1/32 Thk.	NS AC	5F40-1572 5F40-1582	As Required As Required			
NI	Motor Shim (Laminated) 3 3/8 x 3 1/2 x 1/32 Thick (C.R.S.) 3 3/8 x 3 1/2 x 1/32 Thick	AC AC	5F40-1702 5F40-1712	As Required As Required			
NI	Motor Rail (Belt Drive Units)	NA	5F40-1843			2	2
69	Water Regulating Valves	CD					
NI	Muffler 1 1/8 O.D.F. 1 3/8 O.D.F. or 1 5/8 O.D.M.	NA NA	5F20-683 5F40-683	1		1	1
	Compressor Oil Suitable for use with Carrane 12, 22, 500. Used with Hermetic Compressors with Evaporator Temperature above 70°F. Used with Reciprocating Compressors with Evaporator Temperature above 120°F. Viscosity @ 100°F. SSU -150 ± 10 @ 200°F. SSU -40 - 45 Suitable for use with Reciprocating Compressor using Carrane 12 or 22 with Evaporator Temperature above 40°F. or Centrifugal Compressors using C12 with Evaporator Temperature above 40°F., or with Centrifugal Compressor using R114 with Evaporator Temperature above -20°F. Viscosity @ 100°F. SSU -300 ± 20 @ 210°F. SSU -45 - 50	CD		As Required			



FREON CONDENSING UNIT

5F

ITEM NO.	PART NAME	LDC	REPLACEMENT PART NUMBER	UNIT USAGE			
				20	30	40	60
COMPRESSOR BODY GROUP							
NI	Gasket Set	AC	5F20660001	1	1		
		AC	5F60660001			1	1
70	Crankcase Assembly - (For use without Unloaders)	NA	5F20-364	1			
		NA	5F30-364		1		
		NA	5F40-364			1	
	Each Includes:						
NI	Main Bearing, Seal End (on 5F20-364) (1) 5F20-1012	AC					
	(on 5F30-364) (1) 5F30-1012	AC					
	(on 5F40-364) (1) 5F40-1012	AC					
71	Dowel Pin (Valve Plate) 5/16" x 5/8" (on 5F20-364 & 5F40-364) (4) AX11AR-197	MP					
	(on 5F30-364) (6) AX11AR-197	MP					
NI	Dowel Pin (Bearing Washer) 3/16" x 3/8" (1) AX35HR-120	PT					
72	Heater Casing (Start Ser. #420001) (1) 5F20-3742						
73	Magnetic Plug (1) CA99AA-101	AC					
74	Gasket for Magnetic Plug & Heater Casing (2) AU51YA-011	MP					
70	Crankcase Assembly - (For use with Unloaders)	NA	5F20-384	1			
		NA	5F30-384		1		
		NA	5F40-384			1	
		NA	5F60-B399				1
	Each Includes:						
NI	Dowel Pin (Bearing Washer) 3/16" x 3/8" (1) AX35HR-120	MP					
72	Heater Casing (Start Ser. #420001) (1) 5F20-3742	AC					
73	By-Pass Plug (1) 5H40-1141	AC					
74	Gasket for By-Pass Plug & Heater Casing (1) AU51YA-011	MP					
	<i>NOTE: 5F30-384 is equipped for 1 or 2 steps unloading.</i>						
	5F20-384 Also Includes:						
NI	Main Bearing, Seal End (1) 5F20-1012						
71	Dowel Pin, Valve Plate (4) AX11AR-197	MP					
NI	Unloader Oil Tube (1) 5F20-1173	NA					
NI	Tube Ferrule 3/16 (2) 5H40-1531	AC					
	5F30-384 Also Includes:						
NI	Main Bearing, Seal End (1) 5F30-1012	AC					
71	Dowel Pin, Valve Plate (6) AX11AR-197	MP					
NI	Unloader Oil Tube (1) 5F30-333	NS					
NI	Tube Ferrule 3/16 (2) 5H40-1531	AC					
NI	Tube Ferrule 1/4 (1) 5H40-1541	AC					
	5F40-384 Also Includes:						
NI	Main Bearing, Seal End (1) 5F40-1012	AC					
71	Dowel Pin, Valve Plate (4) AX11AR-197	MP					
NI	Unloader Oil Supply Tube						
	To Cylinder #1L (1) 5F40-1153	AC					
NI	To Cylinder #1R (1) 5F40-1173	AC					
NI	To Cylinder #2L (1) 5F40-1123	AC					
NI	Oil Supply Tube (1) 5F40-1233	AC					
NI	Tube Ferrule 3/16 (6) 5H40-1531	AC					
NI	Tube Ferrule 1/4 (2) 5H40-1541	AC					